



LANCOM L-460agn dual Wireless

Quick Reference Guide



Please observe the following when setting up the device

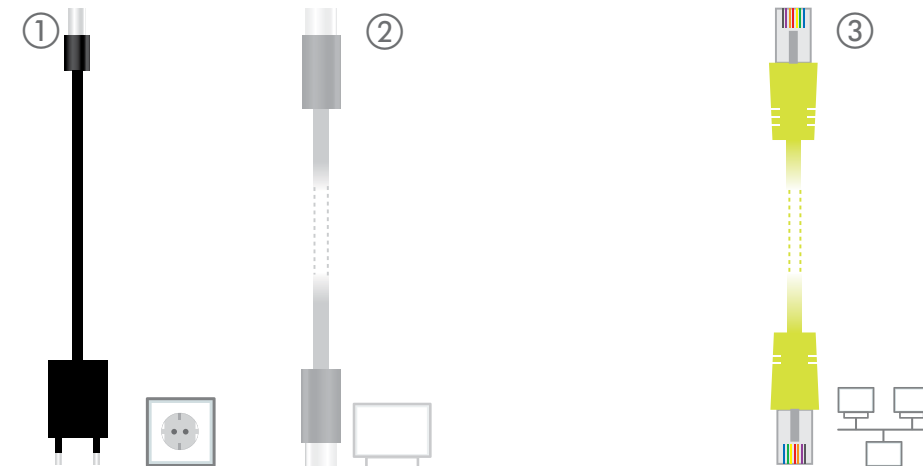
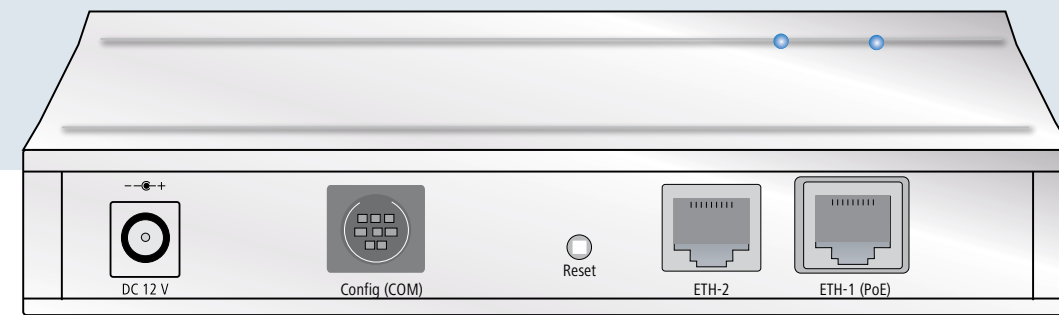
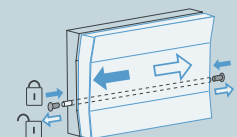
- For devices to be operated on the desktop, please attach the adhesive rubber footpads
- Do not rest any objects on top of the device



- Keep the ventilation slots on the side of the device clear of obstruction
- In case of wall mounting, use the drilling template as supplied



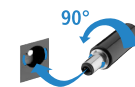
- Lockable wall mounting with the LANCOM Wall Mount (available as an accessory).



①

Power

When connecting the cable to the device, turn the bayonet connector 90° clockwise until it clicks into place.



Use only the supplied power adapter.

②

Optional: Serial configuration cable:

You can connect the device to a PC with a configuration cable (available separately).

③

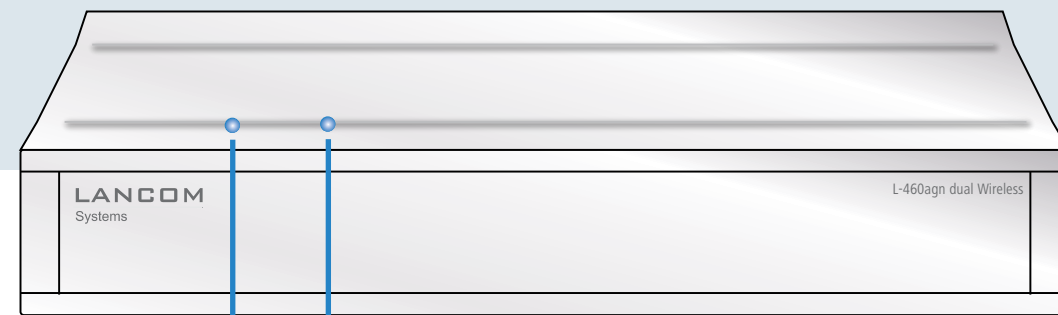
LAN

Use the cable with the kiwi-colored connectors to connect the interface ETH to your PC or a LAN switch.



The best signal coverage is achieved if the unit is wallmounted and the top of the unit is aligned towards the area that requires coverage.

MOUNTING AND CONNECTING THE DEVICE



① Power

Off	Device switched off
Green, on (permanently)	Device operational
Blinking red/green	Configuration password not set. Without a configuration password, the configuration data in the device is unprotected.
Blinking alternately orange/green with the WLAN link LED	At least one WLAN module is in managed mode and has not found a WLAN Controller yet. The corresponding WLAN module(s) is/are switched off until a WLAN Controller is found to supply a configuration, or until being switched manually into another operating mode.
Blinking alternately orange/red with the WLAN link LED	At least one WLAN module is in managed mode and has found a WLAN Controller. However, the WLAN Controller cannot assign a configuration because the firmware and/or the device's loader version is not compatible with the WLAN Controller.

② WLAN Link

Off	No WLAN network defined or WLAN module deactivated. The WLAN module is not transmitting beacons.
Green	At least one WLAN network is defined and WLAN module activated. The WLAN module is transmitting beacons.
Green inverse flashing	Number of flashes = number of connected WLAN stations and P2P wireless connections, followed by a pause (default). Alternatively the frequency of the flashing can indicate signal strength over the defined P2P link or the signal strength between the access point and the device operating in client mode.
Blinking green	DFS scanning or other scan procedure.
Blinking red	Hardware error in WLAN module.

License information for the device firmware (LCOS) is available in the file LCOS-Licenses.txt on the data medium supplied.

Hardware	
Power supply	12 V DC, external power adapter (110 or 230V) with bayonet connector to secure against disconnection
Power consumption	Approx. 15.36 watt via 12V/1.5 A power adapter (value refers to the overall power for the access point and power adapter), about 12.9 watts via PoE
Environment	Temperature range 0 – 40°C; humidity 0-95%; non-condensing. Temperature range 0 – 45° C when mounted vertically on a LANCOM wall mount with cables running to the side
Housing	Robust synthetic housing, rear connectors, ready for wall mounting, Kensington lock; measures 210 x 45 x 140 mm (W x H x D)
Number of fans	None; fanless design, no rotating parts, high MTBF

WLAN	
Frequency band	2400-2483.5 MHz (ISM) or 5150-5825 MHz (restrictions vary between countries)
Radio channels 2.4 GHz	Up to 13 channels, max. 3 non-overlapping (2.4-GHz band)
Radio channels 5 GHz	Up to 26 non-overlapping channels (channels available vary according to country regulations; DFS for automatic dynamic channel selection required)

Interfaces	
ETH1 (PoE)	10/100/1000Base-TX, autosensing, auto node hub, PoE compliant with IEEE 802.3af. If you operate both WLAN modules in the 5-GHz band, we recommend the use of a PoE adapter as per IEEE 802.3at.
ETH2	10/100/1000Base-TX, autosensing, auto node hub
DSL over LAN (DSL oL)	A LAN port can (even parallel to LAN mode) be used as a WAN port for connecting external DSL modems (PPPoE) or external routers.
Serial interface	Serial configuration interface / COM port (8-pin Mini-DIN): 9,600 - 115,000 baud

Declaration of conformity	
CE	EN 60950-1:2006/AC:2011, EN 301 489-1 V1.9.2, EN 301 489-17 V2.1.1
2.4 GHz WLAN	EN 300 328 Version 1.7.1
5 GHz WLAN	EN 301 893 Version 1.5.1
Notifications	Certifications notified in Germany, Belgium, Netherlands, Luxembourg, Austria, Switzerland, UK, Italy, Spain, France, Portugal, Czech Republic, Denmark

Package content	
Manual	Quick Reference Guide (DE/EN) and Quick Installation Guide (DE/EN/FR/ES/IT/PT/NL)
CD/DVD	CD/DVD with firmware, management software (LANconfig, LANmonitor, LANCAP) and documentation
Cable	Ethernet cable, 3m (LAN: kiwi-colored connectors; WAN: green connectors)
Power adapter	External power adapter, NEST 12 V/1.5 A DC/S, barrel connector 2.1/5.5 mm bayonet, LANCOM item no. 110723 (EU, 230 V), LANCOM item no. 110829 (UK, 230 V)

LANCOM, LANCOM Systems and LCOS are registered trademarks. All other names or descriptions used may be trademarks or registered trademarks of their owners. Subject to change without notice. No liability for technical errors and/or omissions. 1110450/13

TECHNICAL DATA